

PARADIGM

DIGITAL RADIO ON-AIR CONSOLE



 **KLOTZ**
DIGITAL

PARADIGM

PARADIGM IS THE PERFECT 'ALL-IN-ONE, OUT-OF-THE-BOX' SOLUTION FOR

- **Local radio stations**
- **Regional radio stations or**
- **Secondary On-Air studios of larger broadcast operations**

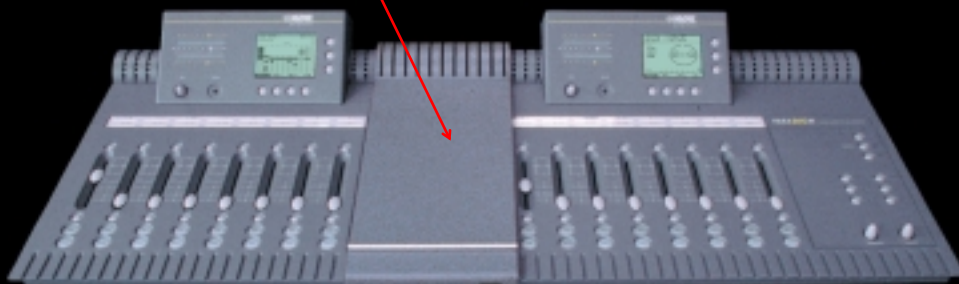
Less expensive than most analog or digital On-Air consoles, the PARADIGM integrates many functions and features into an easy to operate yet powerful On-Air radio console. It can be easily configured via the internal LCD display.

PARADIGM saves installation costs by reducing the need for external equipment, hardware adaptors and cabling, as well as rewiring costs in case of evolving requirements. Its simplified control surface prevents operator errors while providing intuitive controls.

The talent can concentrate on attracting your audience instead of setting up the console for their air shift because each operator has memory recall of his/her console settings such as voice processing, mix-minuses, input sources and bus assignments.



16-fader version



For larger systems a 16-fader PARADIGM version with 48 input sources is also available.



KEY FEATURES

...saves your budget with many standard features including

- sample rate converters on every digital input channel
- all mic inputs with voice processing
- all line inputs with L only, R only, Mono or Stereo Mode functions
- high quality AES reference clock-output for master synchronization
- integrated timer, cue speaker and time of day clock

...is easily integrated into your existing control room

- integrated announcers' mic feeds talkback bus (to telephone and studio output)
- 16 programmable GPIs and GPOs (for machine control, On-Air lights, etc.)
- intercom port with automated input level sensor

...makes your radio station sound better

- by completing the digital audio stream from source to transmitter
- any analog source is connected via high quality (20 bit) A/D and D/A converters to guarantee high performance audio quality

...is easy for your talent to operate

- familiar operator controls (on/off, fader, bus assign, source select)
- operators can save individual console setups
- individual labeling of input channels by LCD control panel
- transparent mix minus system for telephone lines

...meets your station's current requirements

- 20 stereo and 4 mono input sources (mic and analog or digital line inputs)
- 8 channel faders (100mm)
- Off-Air recording functions
- 5 output busses PGM, AUX, TEL1 and TEL2 for mix minus and CUE/PFL
- PGM and AUX have both digital and analog outputs
- compact size and modern design

...grows with your station future requirements

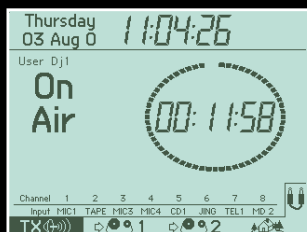
- expandable to 48 input sources and 16 channel faders
- redundant power supply (optional)

...guarantees highest reliability and ease of service

- RS422 interface for external system control and service
- on-board LCD control panel for system configuration, control and service operations
- rugged, permanent console finish

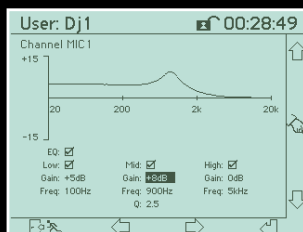
CENTRAL DEVICE MANAGER

The Central Device Manager (CDM) is equipped with an LCD display to offer user-friendly configuration and control of the PARADIGM console. During operation, the CDM display toggles between the On-Air screen and the Routing Page via a single hot button. All console settings can be adjusted and automatically stored via the CDM. The access to all other screens can be password-protected. Below are views of a few of the many CDM screens.



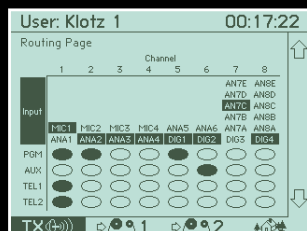
ON AIR SCREEN

This screen is designed to support the normal broadcast operation mode and depicts day, date and time of day as well as timer with graphical and numeric display, fader channel input source name, 3 user presets for 8 console operator recalls. Dedicated hot buttons to the routing page and access to user setups are located next to the screen.



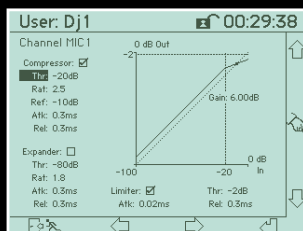
EQ SCREEN

This 3 Band semi parametric has a graphical display. A wide control range of +/-15dB is split up onto three variable frequency bands that can be activated separately. The midrange section has a bandwidth (Q) adjustment from a narrow half octave to a wide 2.5 octaves



ROUTING PAGE SCREEN

Source select with logic follow and bus assign functions are accessed by a single hot button from the On-Air screen. This provides quick input source selection and fast bus assignment to the stereo PGM and AUX and mono TEL1 and TEL2 busses. Selection is made via front panel bus assign button.



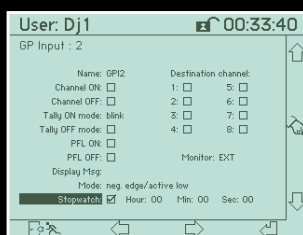
DYNAMICS

Any combination of the fully featured Compressor, Expander and Limiter can be set for each mic in each user's console preset. Dynamics and EQ can be copied from console to console so your talent will have an identical „voice“ in every PARADIGM equipped control room.



INPUT PAGE SCREEN

This screen provides access to the entry of source name (i.e.: CD1), input gain adjustment, programming of speaker muting, access to mic channel voice processing (see Dynamics and EQ views below), pan/balance control, stereo line input mode and phase reverse. This screen can be password protected.



GP INTERFACE SCREEN

GPI inputs and outputs provide external logic connections for machine control, air lights, remote mic channel on and off commands and more. Each GPI input and output can be named and activated by fader, channel on/off button or externally. Mode selects continuous or pulse commands.

TALKBACK/MONITORING CONTROL



The PARADIGM features a streamlined console panel limited to the classic control features essential for live broadcasts. These are clearly arranged and assure safe, fast and intuitive operation.

TALKBACK BUTTONS

Through the mixer's onboard microphone the operator can talkback to TEL1 mix-minus, TEL2 mix-minus or STM (studio monitor) outputs.

MONITOR/HEADPHONES SOURCE SELECTION BUTTONS

These buttons let you select the signal of the PGM and AUX busses or an external signal (EXT) to be listened to through the control monitors or the headphones.

MONITOR/HEADPHONES LEVEL

These two knobs determine the level of the headphones and the control monitors connected to the mixer.

FADER SECTION



A/B SOURCE INDICATORS

LED indication for microphone or line inputs above the fader. Faders 7 and 8 also include a standard 6-source line selector. LED indication for digital or analog input (CH 5 to 8)

FIELDS FOR LABELING CHANNELS

100MM FADER

PROGRAM INDICATOR

Indication if channel is routed to the PGM bus. PGM is lighted, below the fader, to show exactly which channels are assigned to the PGM bus. This feature, usually found on much more expensive consoles, helps to eliminate operator errors over the air

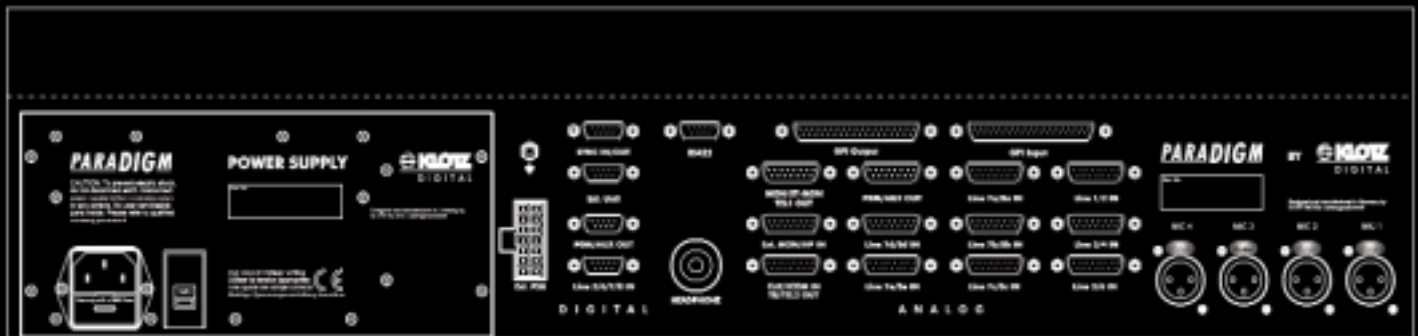
BUS ASSIGN BUTTON

While in the Routing Screen, this button provides bus assignment. In the On-Air page, this button can be a short cut directly to the Input Configuration screen related to the source on that fader.

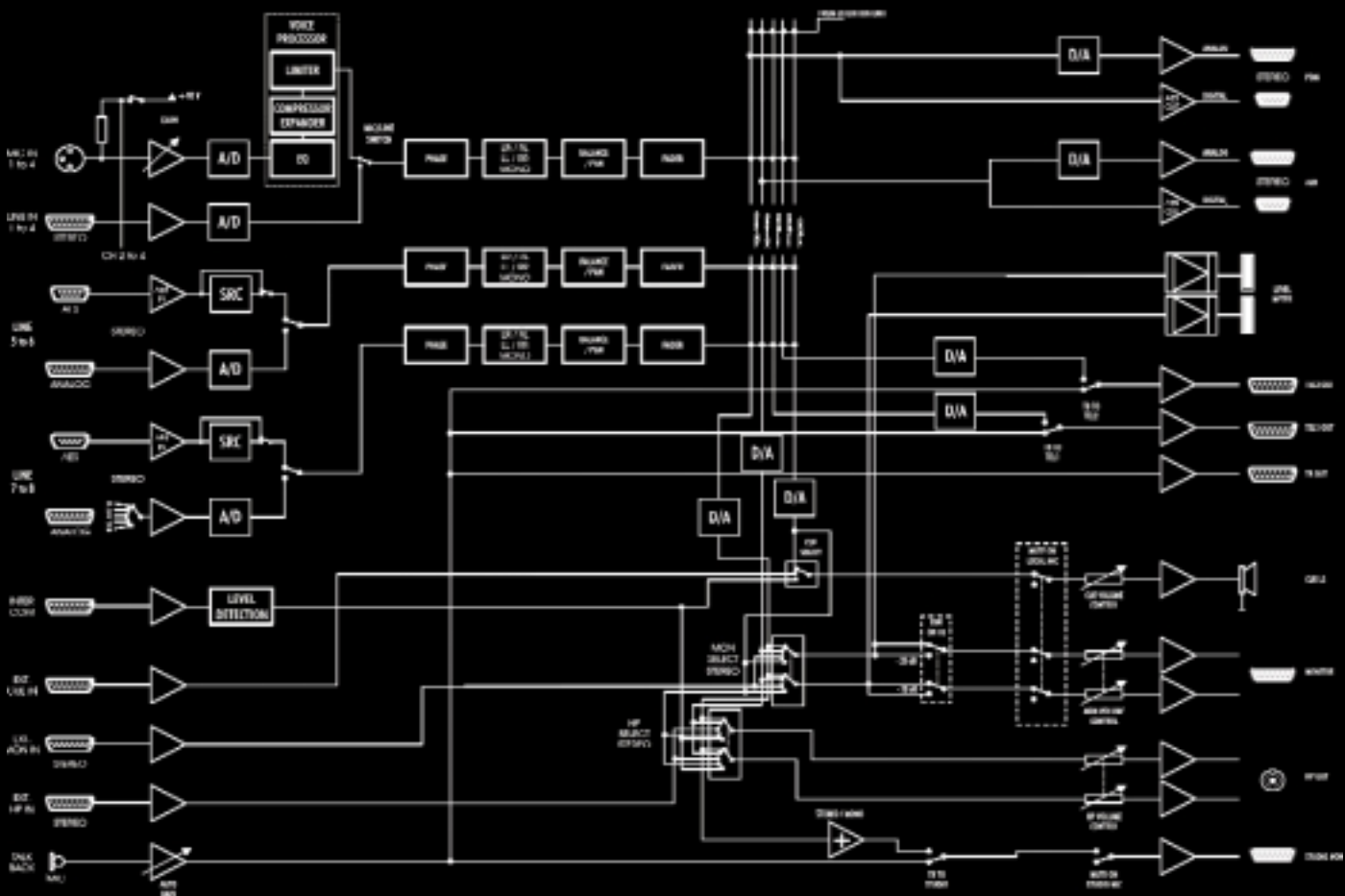
CHANNEL ON/OFF BUTTON

ON and OFF buttons are LED illuminated. These buttons turn the channel off and on, trigger internal console logic, such as speaker muting or timer restart, as well as activate external logic commands like machine starts and on-air lights.

REAR VIEW



BLOCK DIAGRAM



TECHNICAL DATA

This is a 8-fader version. The 16-fader version will be double the Inputs and Outputs and double the fader control numbers.

General

- fully digital on-air mixing console with 24 input channels
- 8 faders (100mm) - expandable to 16 faders and 48 input channels
- high quality components for superior sound
- very easy and intuitive operational handling
- high reliability and easy service
- dedicated design for modern computer-assisted on-air operation

Inputs

- 4 input channels: MIC/Line (20bit A/D)
- 16 stereo line input (20bit A/D)
- 4 AES/EBU stereo inputs with SRC
- 1 intercom input with auto-level-detection

Outputs

- PGM – stereo analog (20bit D/A) and digital (AES/EBU)
- AUX – stereo analog (20bit D/A) and digital (AES/EBU)
- 2 TEL – mono analog (20bit D/A)

External Control

- RS 422 Interface
- Synchronization:
- Master mode: 44.1kHz/48kHz with AES/EBU clock output
- Slave Mode: 44.1kHz/48kHz with AES/EBU clock input
- Time SYNC (GPI Pulse)
- 16 GPIs (external control)
- 16 GPOs (external control)

Monitor

- level control for monitor, Headphone and CUE/PFL speaker
- external input for Monitor and Headphone
- Headphone amp integrated
- CUE/PFL speaker
- level meter

Channel functions

- name (4 characters) assignment to each input
- Mic Input:

phase reverse
phantom power
gain +40 ... +70 dB
mute
25 Hz subsonic filter
PAN
3-Band parametric EQ

The 16-fader version:
8 Mic inputs
31 Line inputs

TEL functions:
direct input/output to telephone hybrid

Stereo input:

input mode selection
LR/RL/LL/RR/Mono
phase reverse
mute on/off
gain -15 ... +15 dB
balance

Digital input (B):

SRC bypass
read AES failure state (mute input in failure)

General functions

- integrated talkback mic for TEL1, TEL 2 and Studio
- watch/stopwatch – assignable to channel faders
- 8 user-configurations
- RS422 interface for external system control and service
- optional redundant power supply
- optional cascading of 2 PARADIGMs for 16 fader operation and 48 inputs

Dimensions

8 fader: W 623mm x H 545mm
16 fader: W 1246mm x H 545mm

*Specifications subject to change without any notice

YOUR LINK TO NEW MARKETS

KLOTZ DIGITAL is the architect and global market leader of digital signal processing and distribution systems for the modern AudioMedia industry

KLOTZ DIGITAL's architecture decentralizes all kind of signal processing and allows the integration of additional multimedia and telematic services. Users of this platform can dramatically improve efficiency of production and realize completely new business models.

Among the current product line-up are VADIS D.C.II, a digital Broadcasting Console; VADIS 880, a variable audio distribution and interface system, which can be user configured and customized; and PARADIGM, a digital On-Air radio mixing console. The X4P network for content exchange between professionals enables any subscriber access to media data stored on servers in a secure private network (SPN). The PARADIGM PRODUCER webcasting and internet radio production platform provides direct access and exchange through the internet, featuring state-of-the-art performance for multimedia production.



Visit our website for the latest news.

KLOTZ DIGITAL AMERICA Phone: +1-678-966-9900
KLOTZ DIGITAL FRANCE Phone: +33-1-48874681
KLOTZ DIGITAL ASIA Phone: +60-3-5193233
KLOTZ DIGITAL AUSTRALIA Phone: +61-2-95187430

KLOTZ DIGITAL AG HEADQUARTERS
Hans-Stiessberger-Str. 2A
D-85540 Haar/Munich
Phone: +49-89-45 672 - 300
e-mail: info@klotz-digital.de
www.klotzdigital.com

 **KLOTZ**
DIGITAL